

FOR LEASE

**Office/Flex Space
In the heart of
Middlebury**

351 SF – 5,766 SF



**10 MERCHANTS ROW
MIDDLEBURY, VERMONT**



FERNANDO CRESTA

O: 802.222.0607

C: 802.343.1305

E: FCRESTA@NEDDERE.COM

JAEGER NEDDE

O: 802.735.0753

C: 802.777.0732

E: JNEDDE@NEDDERE.COM

OVERVIEW

Don't miss the chance to feature your business right in the hustle and bustle of downtown Middlebury, walking distance to Middlebury College with beautiful river views. Located in the historic Battell Block building, this space features a mixture of individual offices, larger meeting spaces, and multiple different suite configurations.

The property is serviced by local property management and located in a perfect downtown location. Previously home to Community College of Vermont, this gorgeous office/flex space has many possibilities.

The second and third floors of the Battell Block are upscale apartments.

RATE AND SIZE(S)

SIZE

5,766 SF - Can be split into smaller suites

LEASE RATE

Negotiable (please call to discuss)

SMALLER SUITES

SIZE

351 SF

624 SF

741 SF

744 SF

878 SF

1,348 SF



BATTELL BLOCK | 10 MERCHANTS ROW, MIDDLEBURY, VERMONT

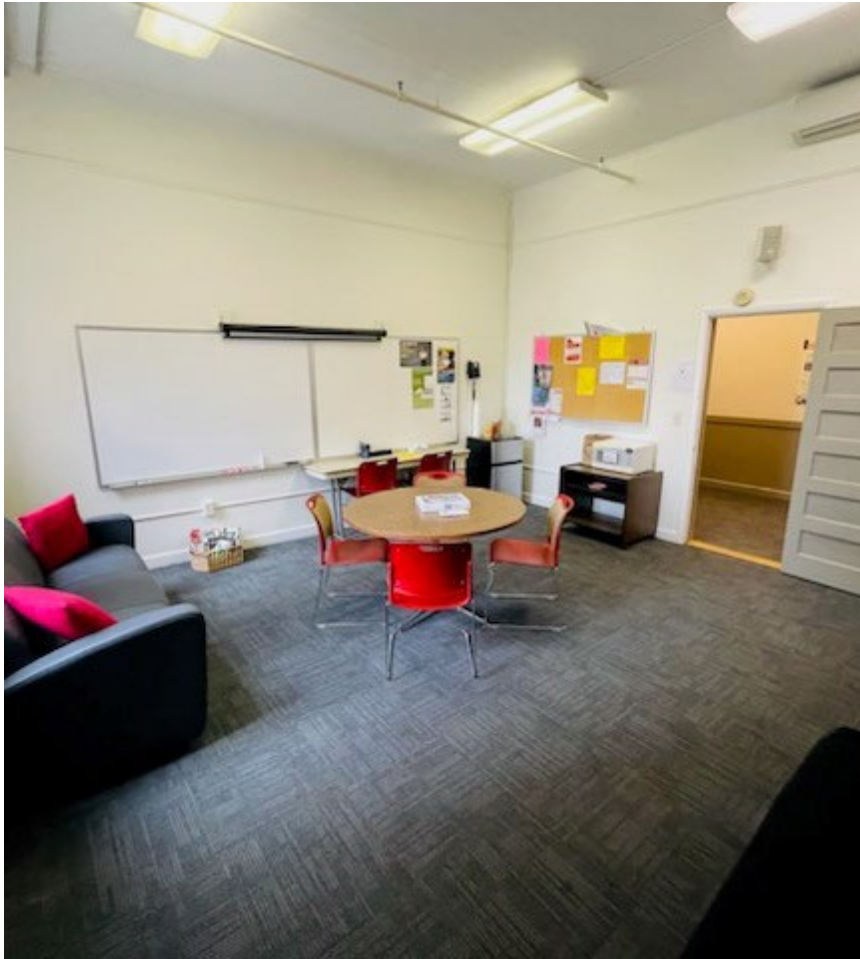
NEDDE REAL ESTATE

747 PINE ST., SUITE 501, BURLINGTON, VT 05401
802.651.6888 | NEDDEREALSTATE.COM

FERNANDO CRESTA | FCRESTA@NEDDERE.COM | 802-343-1305

JAEGER NEDDE | JNEDDE@NEDDERE.COM | 802-777-0732

PHOTOS



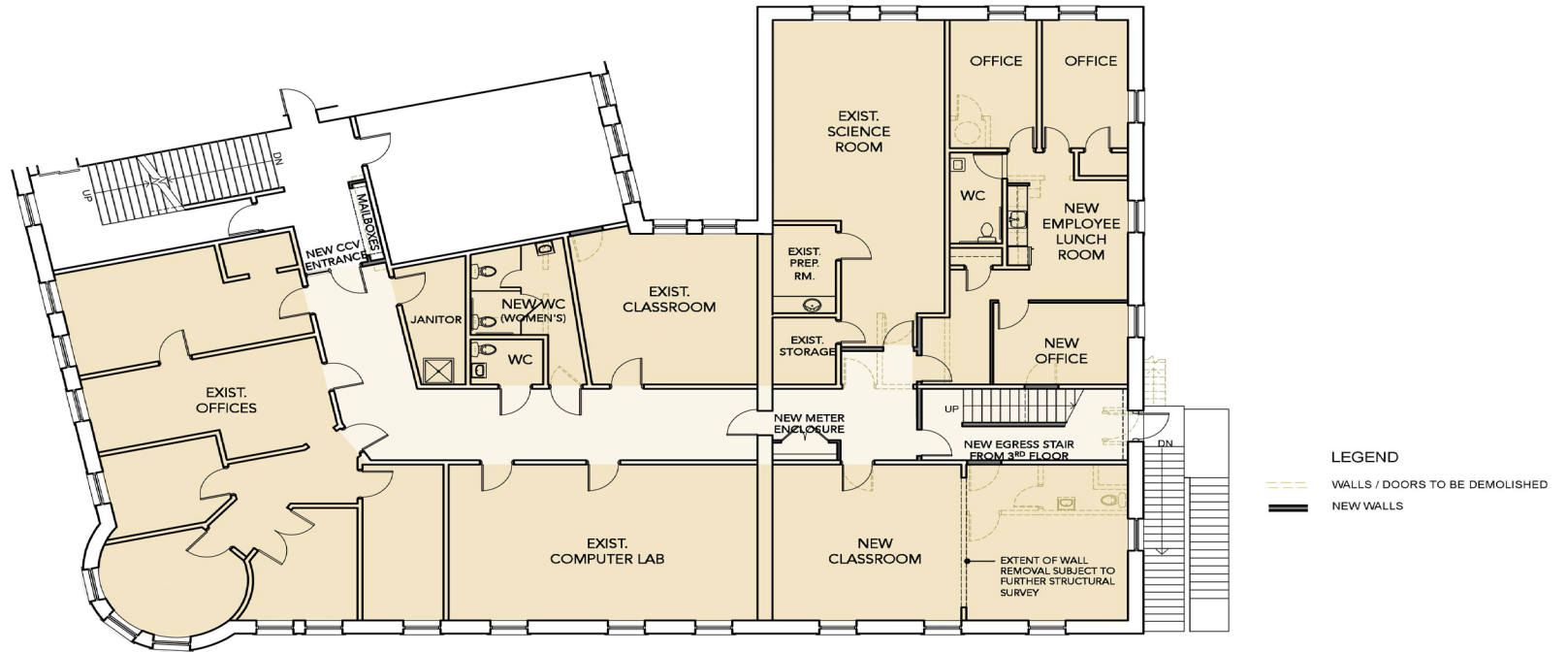
BATELL BLOCK | 10 MERCHANTS ROW, MIDDLEBURY, VERMONT

PHOTOS



BATTELL BLOCK | 10 MERCHANTS ROW, MIDDLEBURY, VERMONT

FLOORPLANS



PROPOSED CCV PLAN

NET AREA: 4,805 SF
GROSS AREA: 5,766 GSF

Battell Block | Middlebury, VT
Proposed CCV Plan SCALE: 3/32" = 1'-0"

youkel [architecture + development]

747 pine street, burlington, vt 05401
t: 802-864 9696 www.youkel.com

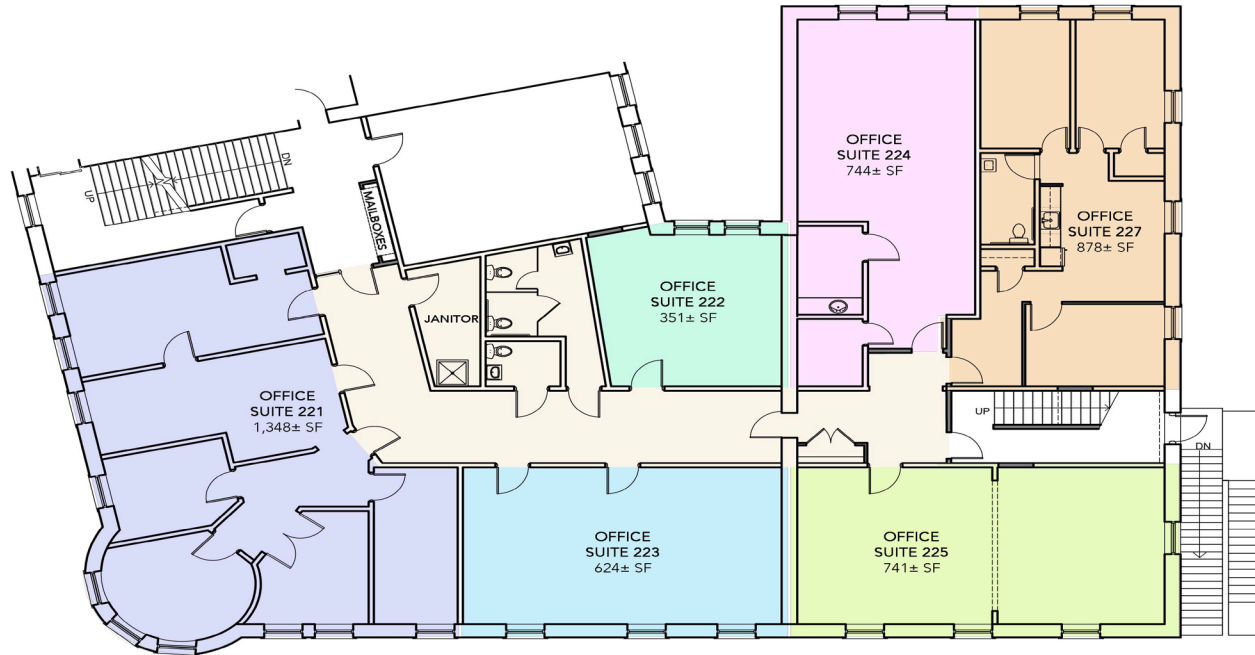
© 2017 Copyright Youkel

June 14, 2017



BATELL BLOCK | 10 MERCHANTS ROW, MIDDLEBURY, VERMONT

FLOORPLANS



SECOND FLOOR OFFICE SUITES

NET AREA: 4,686± SF (office area)
GROSS AREA: 5,766± GSF

Battell Block | Middlebury, VT
Second Floor Office Suites SCALE: 3/32" = 1'-0"

youkel [architecture + development]

Po box 1503, stowe, Vermont 05672
t: 802-864 9696 www.youkel.com

© 2024 Copyright Youkel

July 2, 2024

1

BATELL BLOCK | 10 MERCHANTS ROW, MIDDLEBURY, VERMONT