

FOR LEASE

**Office/Flex Space
In the heart of
Montpelier**

1,000 SF – 5,766 SF



**89 MAIN STREET
MONTPELIER, VERMONT**



JAEGER NEDDE

O: 802.735.0753

C: 802.777.0732

E: JNEDDE@NEDDERE.COM

OVERVIEW

Don't miss the chance to feature your business right in the hustle and bustle of downtown Montpelier, walking distance to the Capital. Located in the City Center building, this space features a mixture of restaurants, retail, individual offices, and larger office suites.

This 90,000 SF business center is serviced by local property management and located in a perfect downtown location, with gorgeous spaces hosting a variety of businesses.

Within 2025, there will be a couple different spaces coming available; don't miss out on your chance to have your business be located in the most popular building in Montpelier!



CITY CENTER | 89 MAIN STREET, MONTPELIER, VERMONT

RATE AND SIZE(S)

SIZE

1,000 SF - 6,000 SF

LEASE RATE

Negotiable (please call to discuss)

SUITES

301: 1,100SF. Available Spring/Summer 2025.

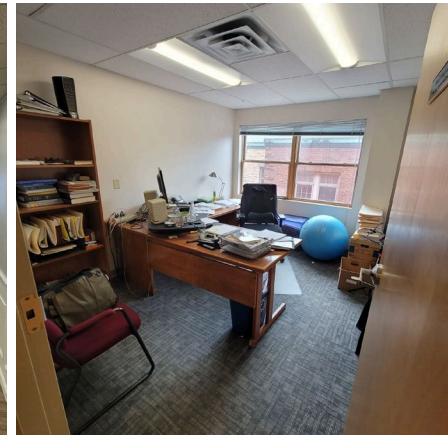
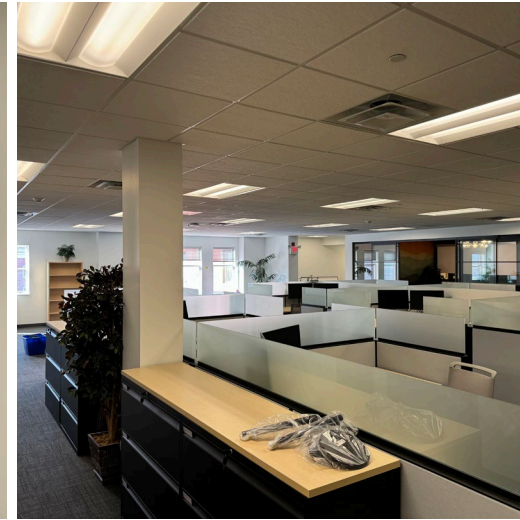
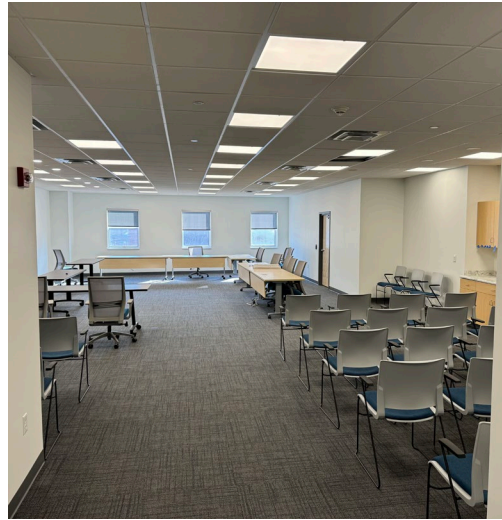
305: 1,781 SF. Available Spring 2025.

2nd floor: 1,000 – 6,400 SF available Spring/Summer 2025

Suite 104: 1st floor. 4,000-14,000SF Retail/Office, available 1/1/2026

Suite 107: 1st floor. 818 SF. Available Spring 2025.

PHOTOS



CITY CENTER | 89 MAIN STREET, MONTPELIER, VERMONT

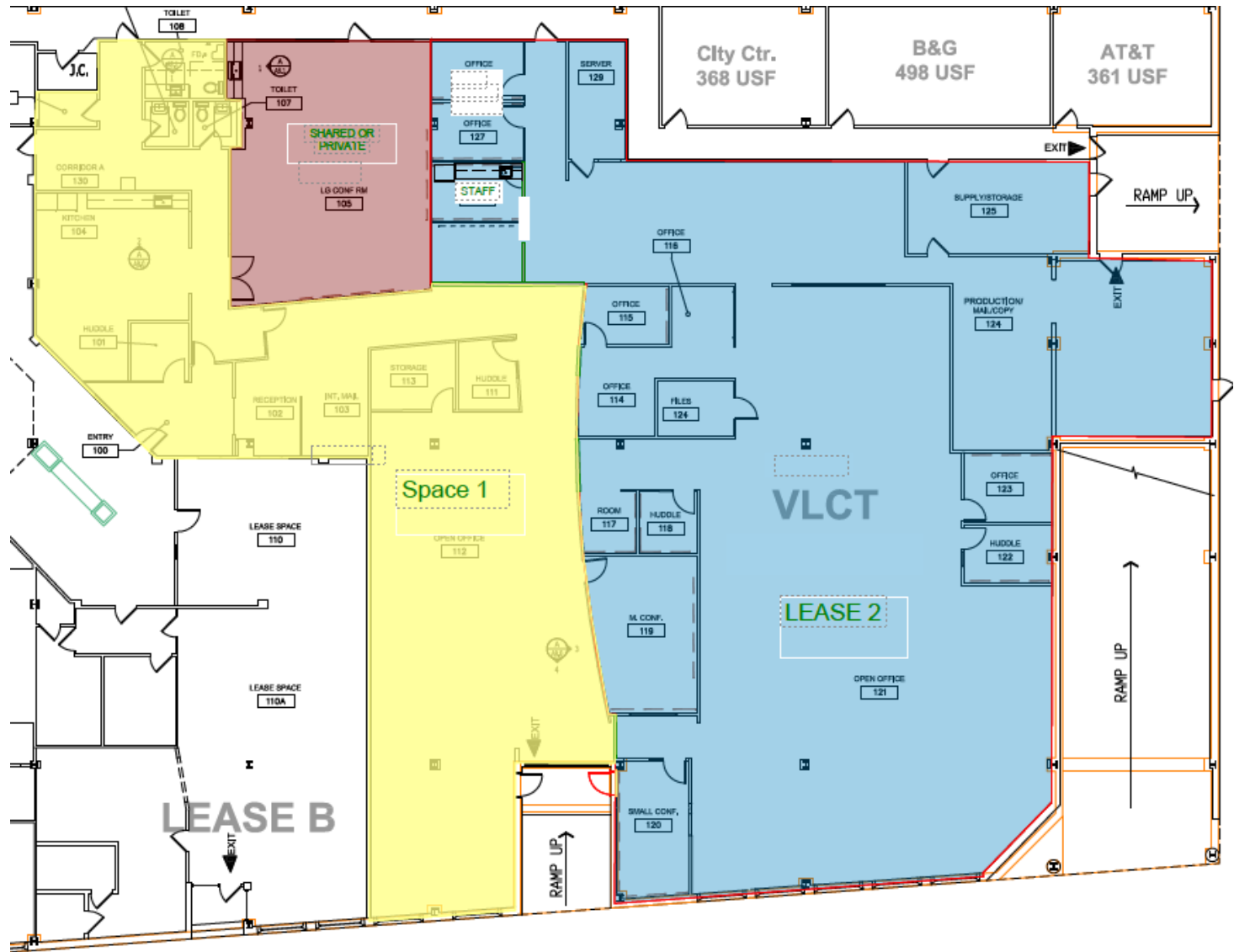
PHOTOS



CITY CENTER | 89 MAIN STREET, MONTPELIER, VERMONT

FLOORPLANS

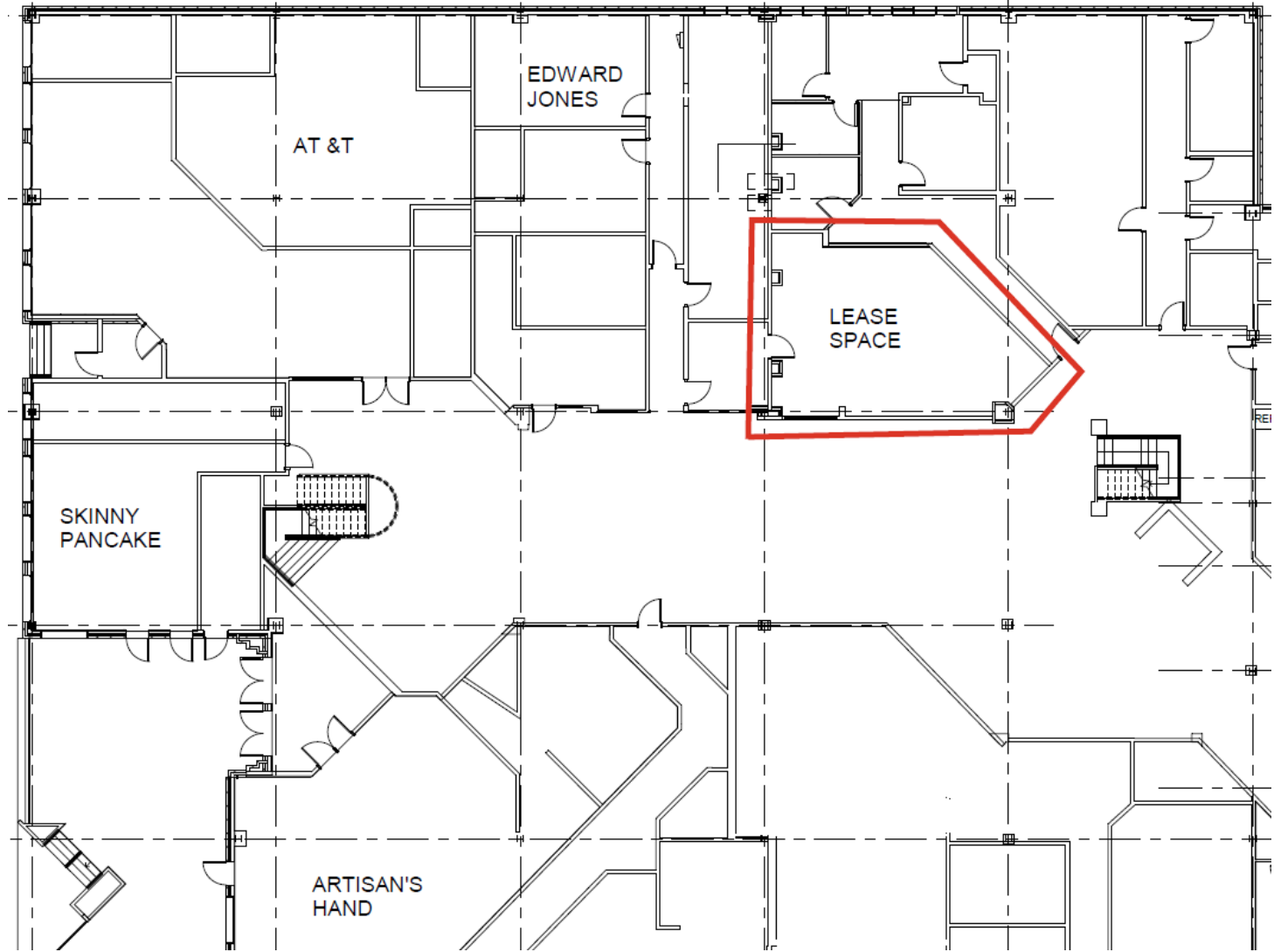
- 1st floor
- Suite 104
- 4,500-14,000 SF
- 1/1/2026



CITY CENTER | 89 MAIN STREET, MONTPELIER, VERMONT

FLOORPLANS

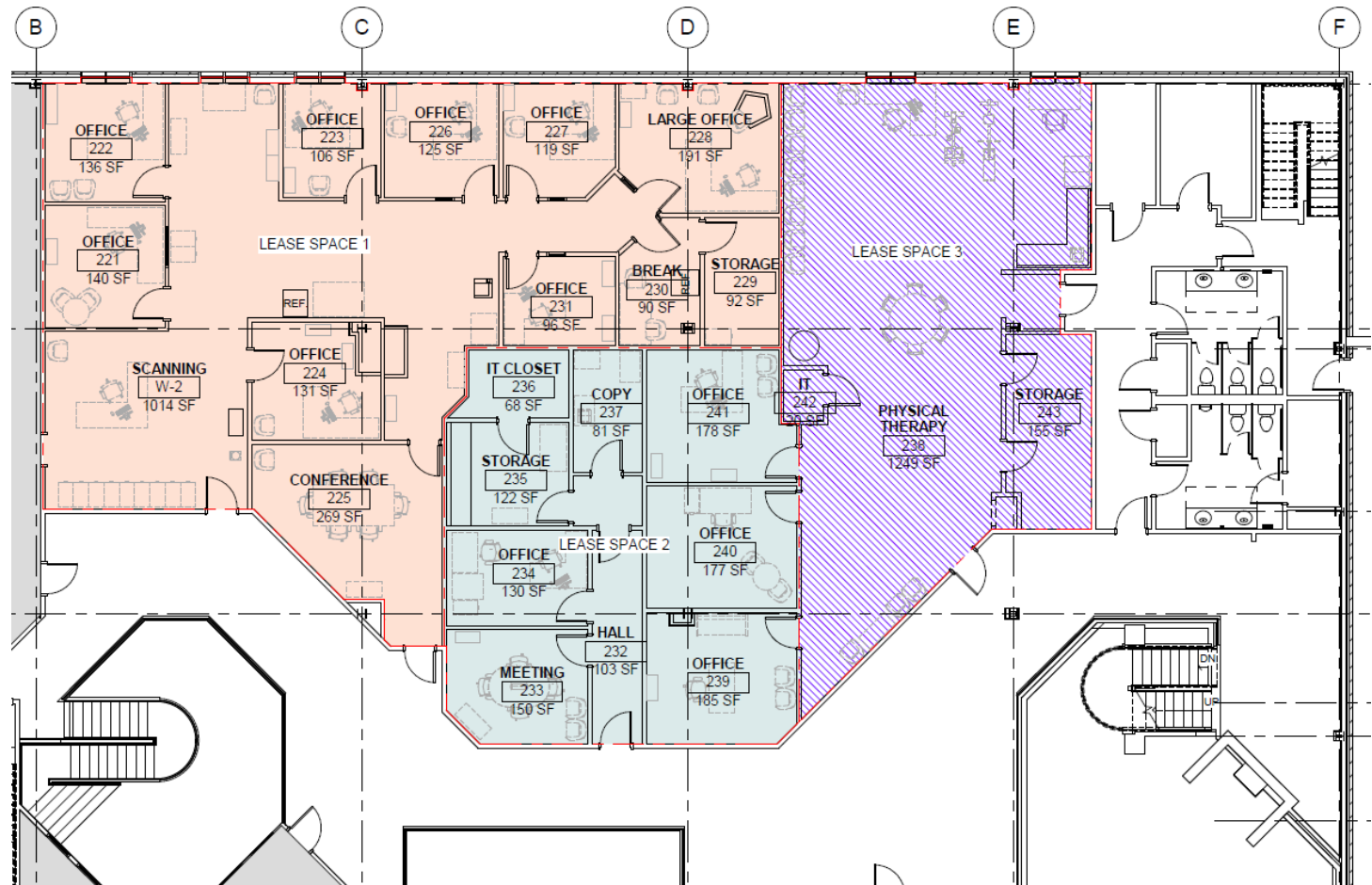
- 1st floor
- Suite 107
- 818SF
- Available Spring, 2025



CITY CENTER | 89 MAIN STREET, MONTPELIER, VERMONT

FLOORPLANS

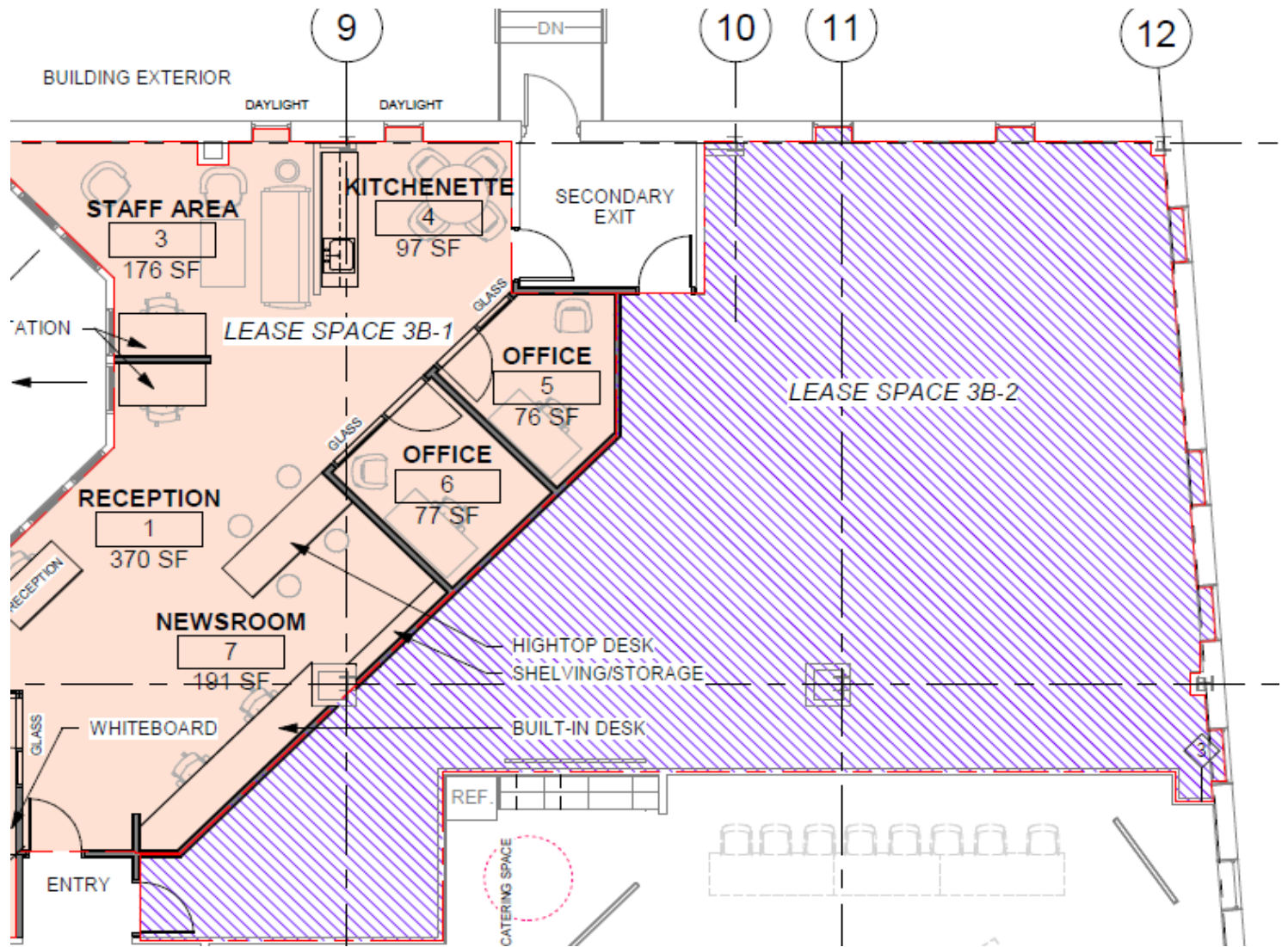
- 2nd floor
- Flexible floor plan
- 1,000-6,400 SF
- Available Spring, 2025



CITY CENTER | 89 MAIN STREET, MONTPELIER, VERMONT

FLOORPLANS

- 3rd floor
- Suite 301, 305
- 1,100-1,781SF



CITY CENTER | 89 MAIN STREET, MONTPELIER, VERMONT